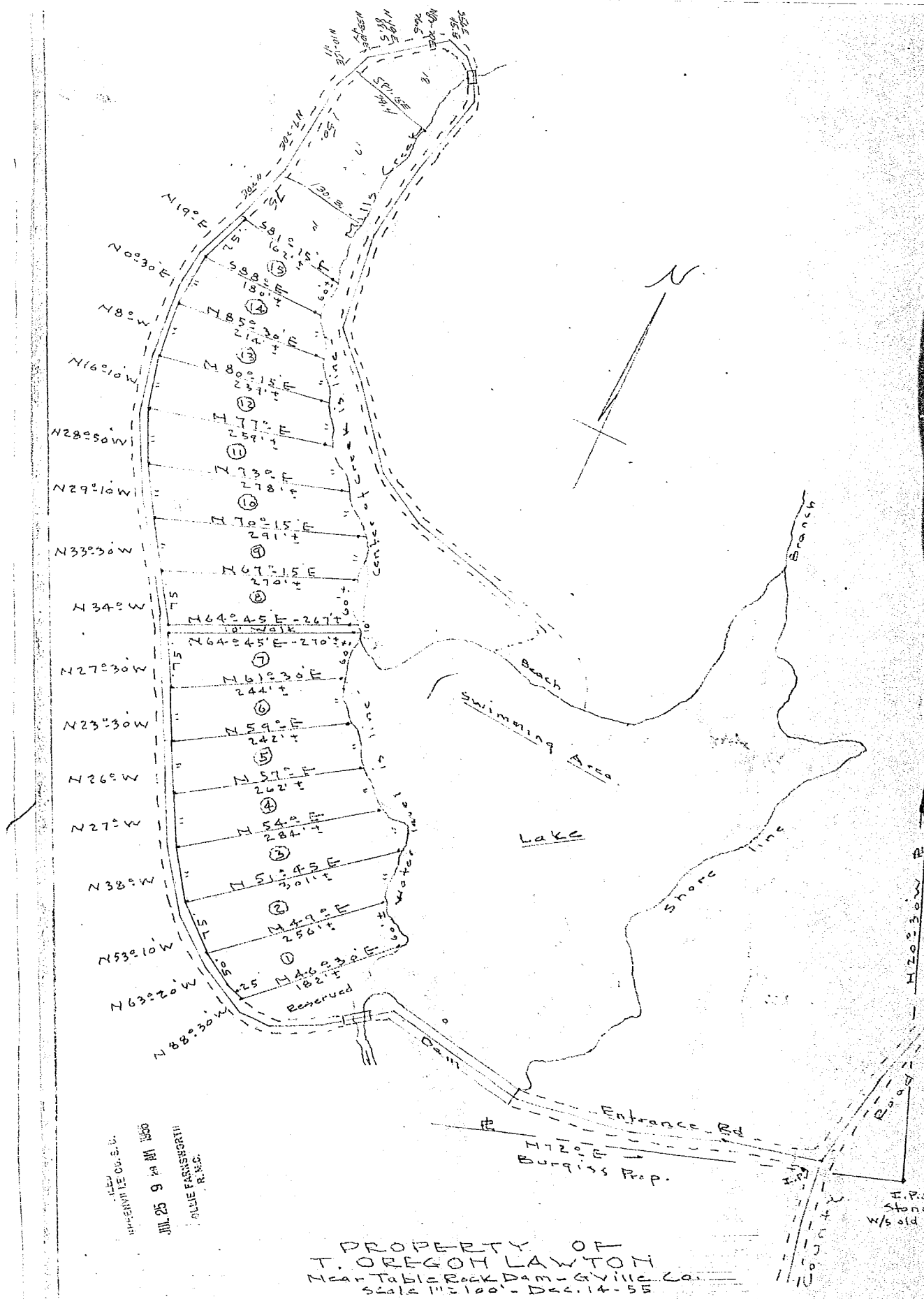


Plat Book - EE - Page 183A



FILED
 DEPARTMENT OF COMMERCE
 JUL 25 9 49 AM 1885
 ALLIE FARNSWORTH
 R.M.C.

PROPERTY OF
 T. OREGON LAWTON
 NEAR Table Rock Dam - Gville, Co.
 Scale 1" = 100' - Dec. 14 - 55

JUL 25 1956 18850

0.1446
 0.1446 at all lot corners.
 0.1446 on lot sides corrected for slope = EE-183 J.C. Hill - L.S. 805

18850
 and recorded on 25th day of July 1956
 Allie Farnsworth
 Register Meas. Book 18850 - Page 183A